



India Meteorological Department
(Ministry of Earth Sciences)

BULLETIN NO. 54 (ARB/01/2023)

TIME OF ISSUE: 0230 HOURS IST

DATED: 13.06.2023

FROM: INDIA METEOROLOGICAL DEPARTMENT (FAX NO. 24643965/24699216/24623220)

TO: CONTROL ROOM, NDM, MINISTRY OF HOME AFFAIRS (FAX.NO. 23093750)
CONTROL ROOM NDMA (FAX.NO. 26701729)
CABINET SECRETARIAT (FAX.NO.23012284, 23018638)
PS TO HON'BLE MINISTER FOR S & T AND EARTH SCIENCES (FAX NO.23316745)
SECRETARY, MOES (FAX NO. 24629777)
H.Q. (INTEGRATED DEFENCE STAFF AND CDS) (FAX NO. 23005137/23005147)
DIRECTOR GENERAL, DOORDARSHAN (23385843)
DIRECTOR GENERAL, AIR (23421105, 23421219)
PIB MOES (FAX NO. 23389042)
UNI (FAX NO. 23355841)

D.G. NATIONAL DISASTER RESPONSE FORCE (NDRF) (FAX NO. 26105912, 2436 3260)
DIRECTOR, PUNCTUALITY, INDIAN RAILWAYS (FAX NO. 23388503)
CHIEF SECRETARY, KERALA (FAX NO. 0471-2327176)
ADMINISTRATOR, LAKSHADWEEP ISLANDS (FAX NO. 0413-262184)
CHIEF SECRETARY, TAMILNADU (FAX NO. 044-25672304)
CHIEF SECRETARY, GOA (FAX NO. 0832-2415201)
CHIEF SECRETARY, KARNATAKA (FAX NO. 080-22258913)
CHIEF SECRETARY, MAHARASHTRA (FAX NO. 022- 22028594)
CHIEF SECRETARY, GUJARAT (FAX NO. 079-23250305)
CHIEF SECRETARY, DAMAN & DIU (FAX NO. 0260-2230775)
CHIEF SECRETARY, DADRA & NAGAR HAVELI (FAX NO. 0260-2645466)

Sub: Very Severe Cyclonic Storm “Biparjoy” (pronounced as “Biporjoy”) over Northeast and adjoining Eastcentral Arabian Sea: Cyclone Warning for Saurashtra & Kutch Coasts (Orange Message)

The Extremely Severe Cyclonic Storm “Biparjoy” (pronounced as “Biporjoy”) over Northeast and adjoining Eastcentral Arabian Sea moved nearly north-northwestwards with a speed of 04 kmph during past 6-hours, weakened into a **Very Severe Cyclonic Storm** and lay centered at 2330 hours IST of yesterday, the 12th June, 2023 over Northeast and adjoining Eastcentral Arabian Sea near latitude 20.1°N and longitude 67.2°E, about 310 km southwest of Porbandar, 320 km southwest of Devbhumi Dwarka, 380 km south-southwest of Jakhau Port, 400 km south-southwest of Naliya and 530 km south of Karachi (Pakistan).

It is very likely to move nearly northwards till 14th morning, then move north-northeastwards and cross Saurashtra & Kutch and adjoining Pakistan coasts between Mandvi (Gujarat) and Karachi (Pakistan) near Jakhau Port (Gujarat) by evening of 15th

June as a very severe cyclonic storm with maximum sustained wind speed of 125-135 kmph gusting to 150 kmph.

Forecast track and intensity are given below:

Date/Time(IST)	Position (Lat. °N/ long. °E)	Maximum sustained surface wind speed (Kmph)	Category of cyclonic disturbance
12.06.23/2330	20.1/67.2	155-165 Gusting To 185	Very Severe Cyclonic Storm
13.06.23/0530	20.4/67.0	150-160 Gusting To 180	Very Severe Cyclonic Storm
13.06.23/1130	20.8/67.1	145-155 Gusting To 170	Very Severe Cyclonic Storm
13.06.23/1730	21.2/67.2	140-150 Gusting To 165	Very Severe Cyclonic Storm
13.06.23/2330	21.5/67.3	135-145 Gusting To 160	Very Severe Cyclonic Storm
14.06.23/1130	22.1/67.5	130-140 Gusting To 155	Very Severe Cyclonic Storm
14.06.23/2330	22.7/67.9	130-140 Gusting To 155	Very Severe Cyclonic Storm
15.06.23/1130	23.2/68.4	125-135 Gusting To 150	Very Severe Cyclonic Storm
15.06.23/2330	23.7/69.0	70-80 Gusting To 90	Cyclonic Storm
16.06.23/1130	24.2/69.8	30-40 Gusting To 50	Depression

(i) Heavy Rainfall warning for Gujarat (Kutch, Devbhumi Dwarka, Porbandar, Jamnagar, Rajkot, Junagarh and Morbi districts):

- Light to moderate rainfall at many places in coastal districts of Saurashtra & Kutch with isolated heavy rainfall on 13th June.
- Light to moderate rainfall at most places with heavy to very heavy rainfall at isolated places very likely over Kutch, Devbhumi Dwarka, Porbandar, Jamnagar, Rajkot, Junagarh and Morbi districts of Saurashtra & Kutch on 14th June.
- The intensity of rainfall would increase with heavy to very heavy rainfall at a few places and extremely heavy falls at isolated places very likely over Kutch, Devbhumi Dwarka & Jamnagar and heavy to very heavy rainfall at a few places over Porbandar, Rajkot, Morbi & Junagarh districts of Gujarat on 15th June.
- Isolated heavy rainfall is very likely over remaining districts of Saurashtra and north Gujarat region on 15th June.
- Light to moderate rainfall at most places with heavy to very heavy rainfall at isolated places very likely over north Gujarat and adjoining south Rajasthan on 16th June.

(ii) Wind warning:

13th June: Gale wind speed reaching 155-165 kmph gusting to 185 kmph prevailing over northeast and adjoining eastcentral Arabian Sea Arabian Sea likely to decrease becoming 140-150 kmph gusting to 165 kmph from the evening. Gale wind speed reaching 80-90 kmph gusting to 100 kmph is likely to prevail over adjoining areas of eastcentral Arabian Sea. Squally wind speed reaching 40-50 kmph gusting to 60 kmph is likely over adjoining areas of northwest Arabian Sea.

14th June: Gale wind speed reaching 135-145 kmph gusting to 160 kmph is likely to prevail over northeast Arabian Sea. Squally wind speed reaching 40-50 kmph gusting to 60 kmph is likely over adjoining areas of eastcentral Arabian Sea.

15th June: Gale wind speed reaching 125-135 kmph gusting to 150 kmph is likely to prevail over northeast Arabian Sea and likely to decrease becoming 90-100 kmph gusting to 110 kmph from evening. Squally wind speed reaching 40-50 kmph gusting to 60 kmph is likely over adjoining areas of eastcentral Arabian Sea.

16th June: Squally wind speed reaching 40-50 kmph gusting to 60 kmph is likely over adjoining areas of eastcentral Arabian Sea till evening.

Wind warning along & off Saurashtra & Kutch coasts (Kutch, Devbhumi Dwarka, Porbandar, Jamnagar, Rajkot, Junagarh and Morbi districts) including Gulf of Kutch:

- Squally wind speed reaching 45-55 kmph gusting to 65 kmph prevailing over these regions and likely to become 50-60 kmph gusting to 70 kmph from today morning to 14th June morning.
- It would increase becoming Gale wind speed reaching 65-75 kmph gusting to 85 kmph from 14th June morning along & off Porbandar & Devbhoomi Dwarka district coasts. It would become 125-135 kmph gusting to 150 kmph from 15th morning for subsequent 12 hours along & off Kutch, Devbhumi Dwarka, Porbandar, Jamnagar, Rajkot, Junagarh and Morbi districts. Thereafter it would decrease gradually becoming 45-55 kmph gusting to 65 kmph over north Gujarat and adjoining south Rajasthan from 16th morning to evening.
- Squally wind speed reaching 55-65 kmph gusting to 75 kmph very likely to prevail along & off remaining districts Saurashtra coast on 14th & 15th June and 30-40 kmph gusting to 50 kmph during 16th morning to evening.

(iii) Sea condition

13th June: Sea condition is phenomenal over northeast and adjoining eastcentral Arabian Sea and rough over adjoining northwest Arabian Sea

14th June: Sea condition is likely to be phenomenal over northeast Arabian Sea and rough to very rough sea condition is likely over adjoining areas of eastcentral Arabian Sea.

15th June: Sea condition is likely to be phenomenal to high over northeast Arabian Sea and very rough to rough over adjoining eastcentral Arabian Sea till 15th June evening and improve thereafter.

Along & off Saurashtra& Kutch coasts:

Sea condition is likely to be rough to very rough till 14th morning and high to phenomenal thereafter till 15th June evening and would improve thereafter.

(iv) Storm Surge Warning (Kutch, Devbhumi Dwarka, Porbandar, Jamnagarh and Morbi districts)

Storm surge of about 2 -3 m above the astronomical tide is likely to inundate the low lying areas of above districts during the time of landfall. The astronomical tides along these districts could be upto 3-6 meters in different places.

(v) Damage expected over Kutch, Devbhumi Dwarka, Porbandar, Jamnagar, Morbi & Junagarh & Rajkot districts of Gujarat on 15th June:

- Total destruction of thatched houses/ extensive damage to kutcha houses. Some damage to Pucca houses.
- Potential threat from flying objects.
- Bending/ uprooting of power and communication poles.
- Major damage to Kutcha and Pucca roads. Flooding of escape routes. Disruption of railways, overhead power lines and signalling systems.
- Widespread damage to standing crops, plantations, orchards, falling of green coconuts and tearing of palm fronds. Blowing down of bushy trees like mango.
- Small boats, country crafts may get detached from moorings.
- Visibility severely affected due to salt spray.

(vi) Fishermen Warning & Action Suggested (Kutch, Devbhumi Dwarka, Porbandar, Jamnagar, Rajkot, Junagarh and Morbi districts) and for Offshore & Onshore Industries (Graphics Attached):

- Total suspension of fishing operations over
 - Eastcentral and adjoining Westcentral Arabian Sea till 15th June.
 - Northeast Arabian Sea during 13th -15th June
- Those out at sea are advised to return to coast.
- Judicious regulation of offshore and onshore activities.
- Ports along the west coast of India may take necessary precautions.
- Naval base operations may maintain necessary precautions.
- Movement in motor boats and small ships all & off these coasts to be avoided.
- Mobilise evacuation from coastal areas of Saurashtra and Kutch (Kutch, Devbhumi Dwarka, Porbandar, Jamnagar, Rajkot, Junagarh and Morbi districts).
- Judicious regulation of rail and road traffic.
- People in affected areas to remain indoors.
- Tourism activities may be restricted over these areas.
- Preparatory actions before the cyclones.

The system is under continuous surveillance and the next message will be issued at 0530 hours IST of today, the 13th June, 2023.

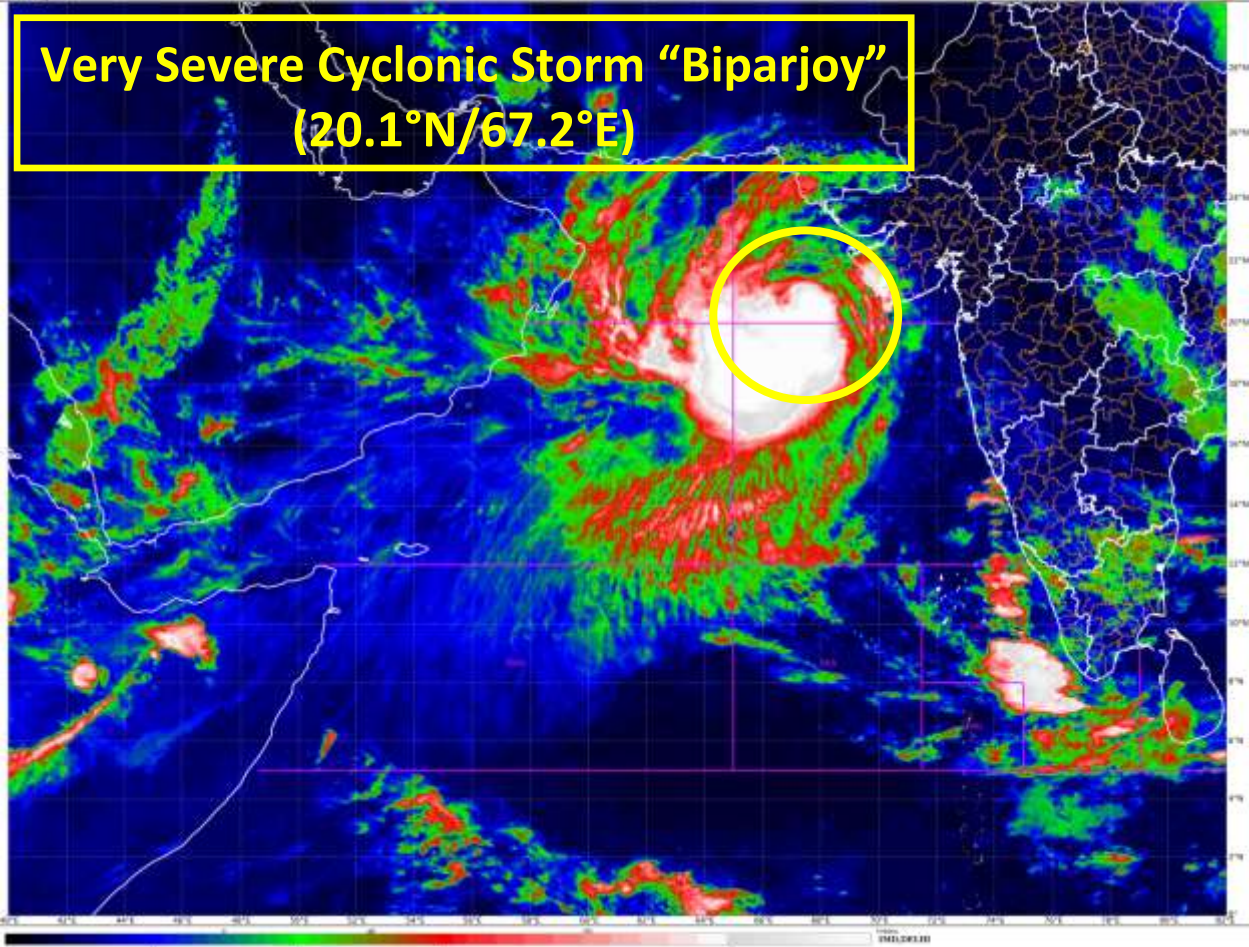
(Krishna Mishra)
Scientist C, Cyclone Warning Division, New Delhi

Copy to: ACWC Kolkata/ ACWC Chennai/ CWC Bhubaneswar/CWCVisakhapatnam/CWC Ahmedabad/ MO Port Blair/MC Raipur/MC Bhopal/MC Hyderabad/RMC Nagpur

LEGEND: Heavy Rainfall: 64.5 to 115.5mm, **Very Heavy Rainfall:** 115.6 to 204.4mm **Most Places:** more than 76% of total stations, **Isolated Places:** Less than 25% of total

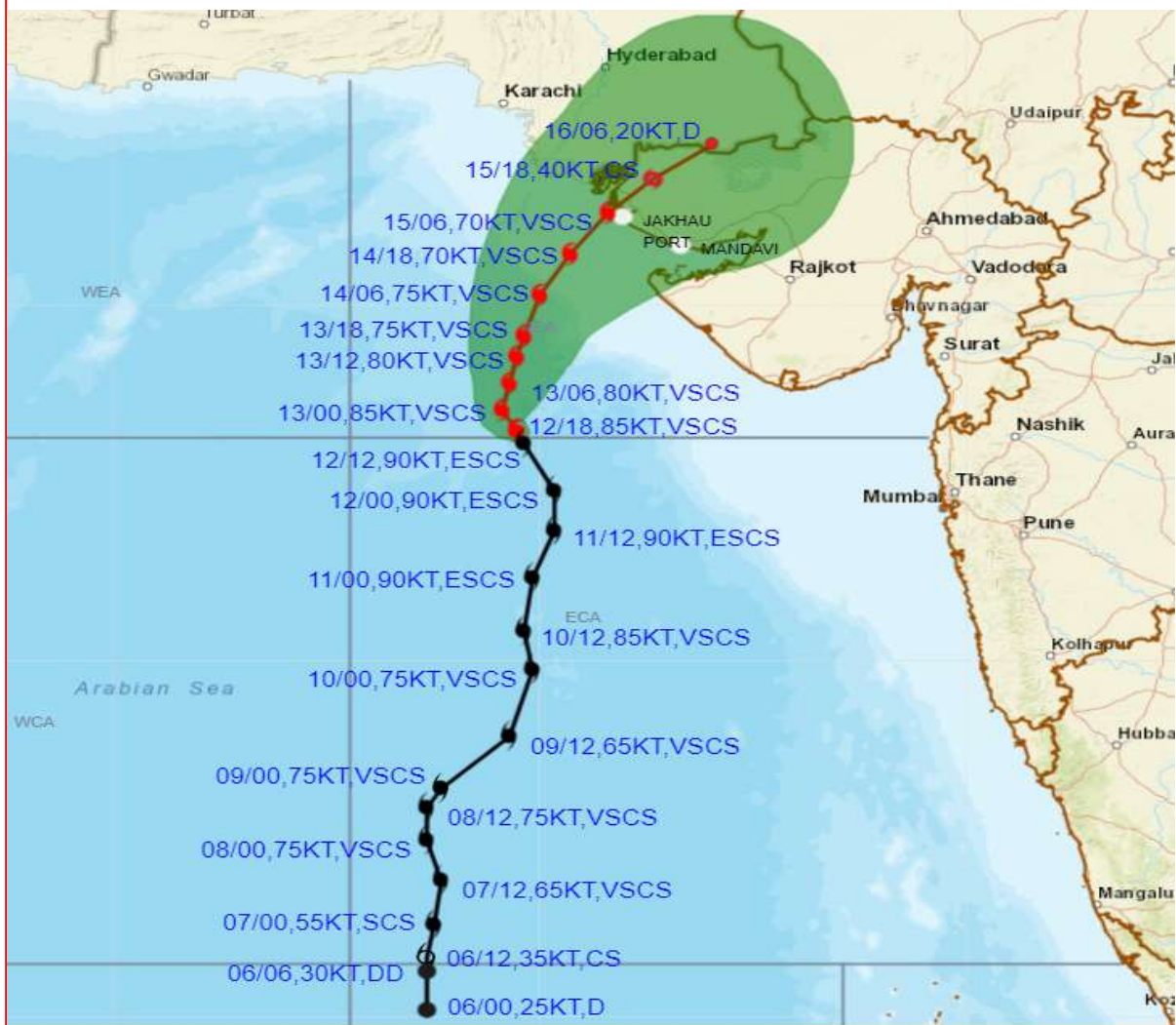


**Very Severe Cyclonic Storm "Biparjoy"
(20.1°N/67.2°E)**





**OBSERVED AND FORECAST TRACK ALONGWITH CONE OF UNCERTAINTY OF
VERY SEVERE CYCLONIC STORM "BIPARJOY" OVER NORTHEAST AND
ADJOINING EASTCENTRAL ARABIAN SEA BASED ON 1800 UTC (2330 IST) OF
12TH JUNE 2023.**



DATE/TIME IN UTC

IST=UTC + 0530

L: LOW PRESSURE AREA

WML: WELL MARKED LOW PRESSURE AREA

D: DEPRESSION (17-27 KT)

DD: DEEP DEPRESSION (28-33 KT)

CS: CYCLONIC STORM (34-47 KT)

SCS: SEVERE CYCLONIC STORM (48-63KT)

VSCS: VERY SEVERE CYCLONIC STORM (64-89 KT)

ESCS: EXTREMELY SEVERE CYCLONIC STORM (90-119 KT)

SuCS: SUPER CYCLONIC STORM (≥ 120 KT)

● LESS THAN 34 KT

⊙ 34-47 KT

⊙ ≥ 48 KT

— OBSERVED TRACK

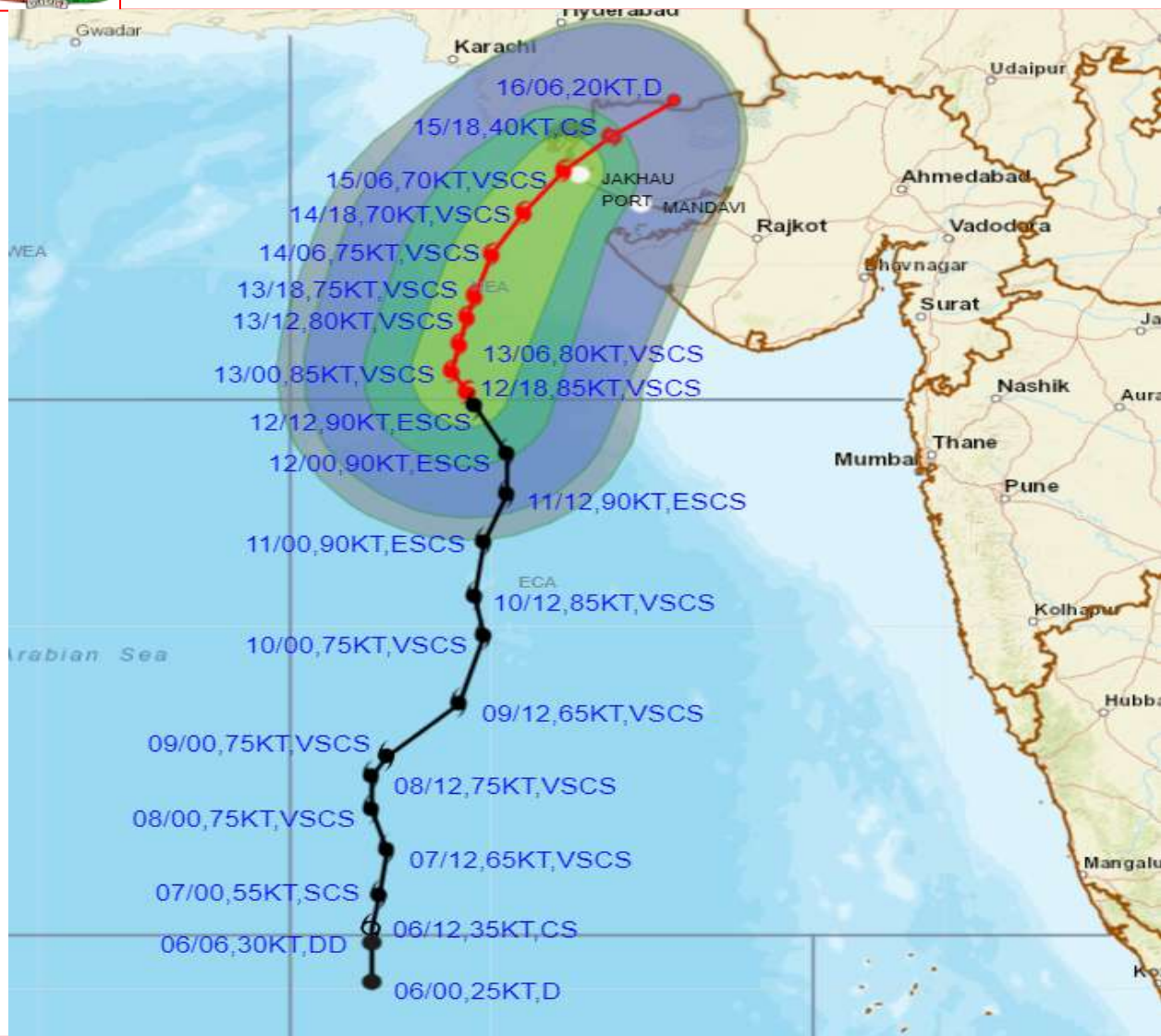
— FORECAST TRACK

▲ CONE OF UNCERTAINTY

STATIONS	DISTANCE(KM) AND DIRECTION FROM STATIONS			
	13.06.23/1800	14.06.23/1800	15.06.23/1800	
PORBANDAR	240, W	220, WNW	250, NNW	
DWARKA	200, WSW	130, WNW	160, N	
JAKHAU PORT	230, SW	90, SW	70, NNE	
NALIYA	250, SW	110, WSW	60, NNE	
KARACHI AIRPORT	370, S	250, SSE	230, ESE	



OBSERVED AND FORECAST TRACK ALONGWITH QUADRANT WIND DISTRIBUTION OF VERY SEVERE CYCLONIC STORM "BIPARJOY" OVER NORTHEAST AND ADJOINING EASTCENTRAL ARABIAN SEA BASED ON 1800 UTC (2330 IST) OF 12TH JUNE 2023.



DATE/TIME IN UTC

IST=UTC + 0530

L: LOW PRESSURE AREA

WML: WELL MARKED LOW PRESSURE AREA

D: DEPRESSION (17-27 KT)

DD: DEEP DEPRESSION (28-33 KT)

CS: CYCLONIC STORM (34-47 KT)

SCS: SEVERE CYCLONIC STORM (48-63KT)

VSCS: VERY SEVERE CYCLONIC STORM (64-89 KT)

ESCS: EXTREMELY SEVERE CYCLONIC STORM (90-119 KT)

SuCS: SUPER CYCLONIC STORM (≥ 120 KT)

● LESS THAN 34 KT

○ 34-47 KT

● ≥ 48 KT

— OBSERVED TRACK

— FORECAST TRACK

▲ CONE OF UNCERTAINTY

AREA OF MAXIMUM SUSTAINED WIND SPEED:

■ 28-33 KT (52-61 KMPH)

■ 34-49 KT (62-91 KMPH)

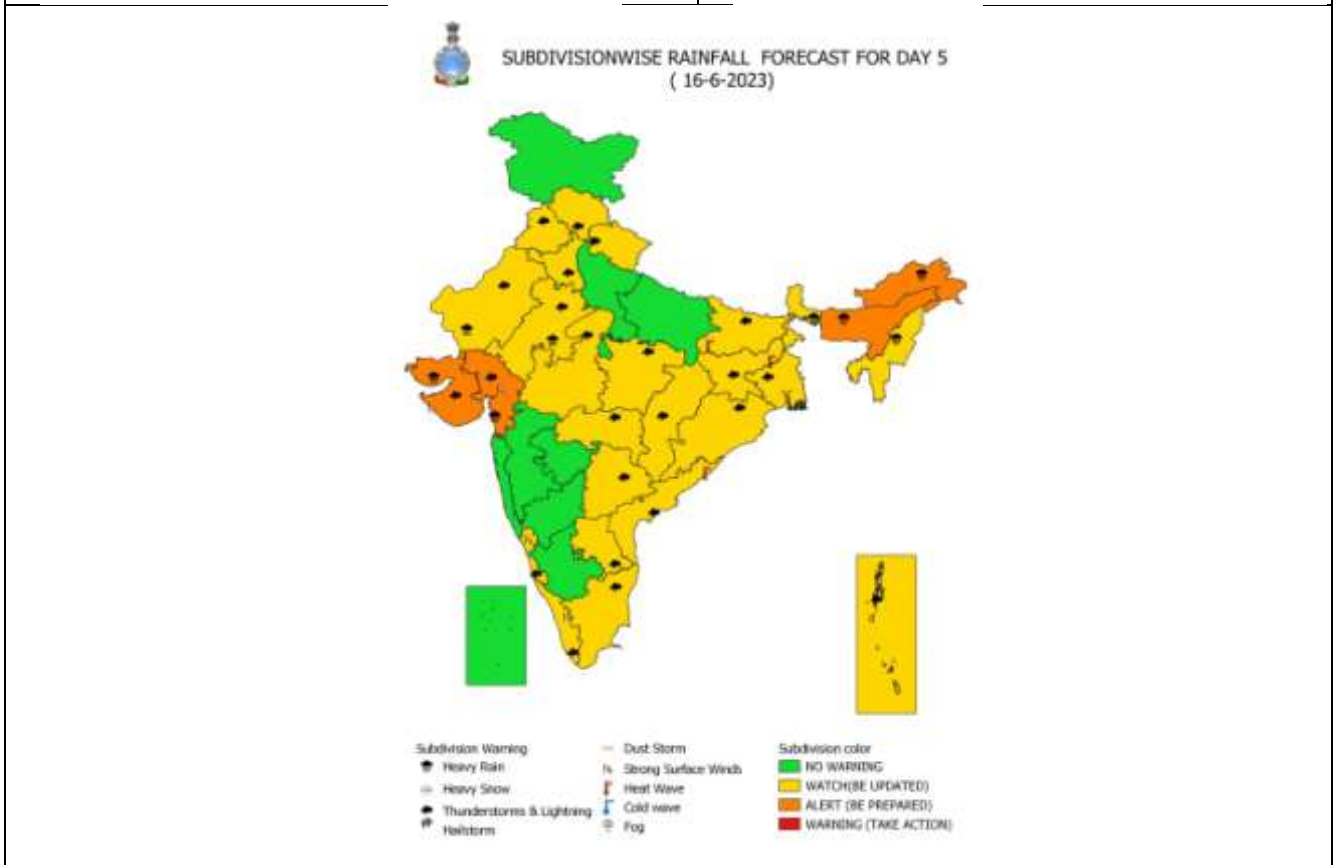
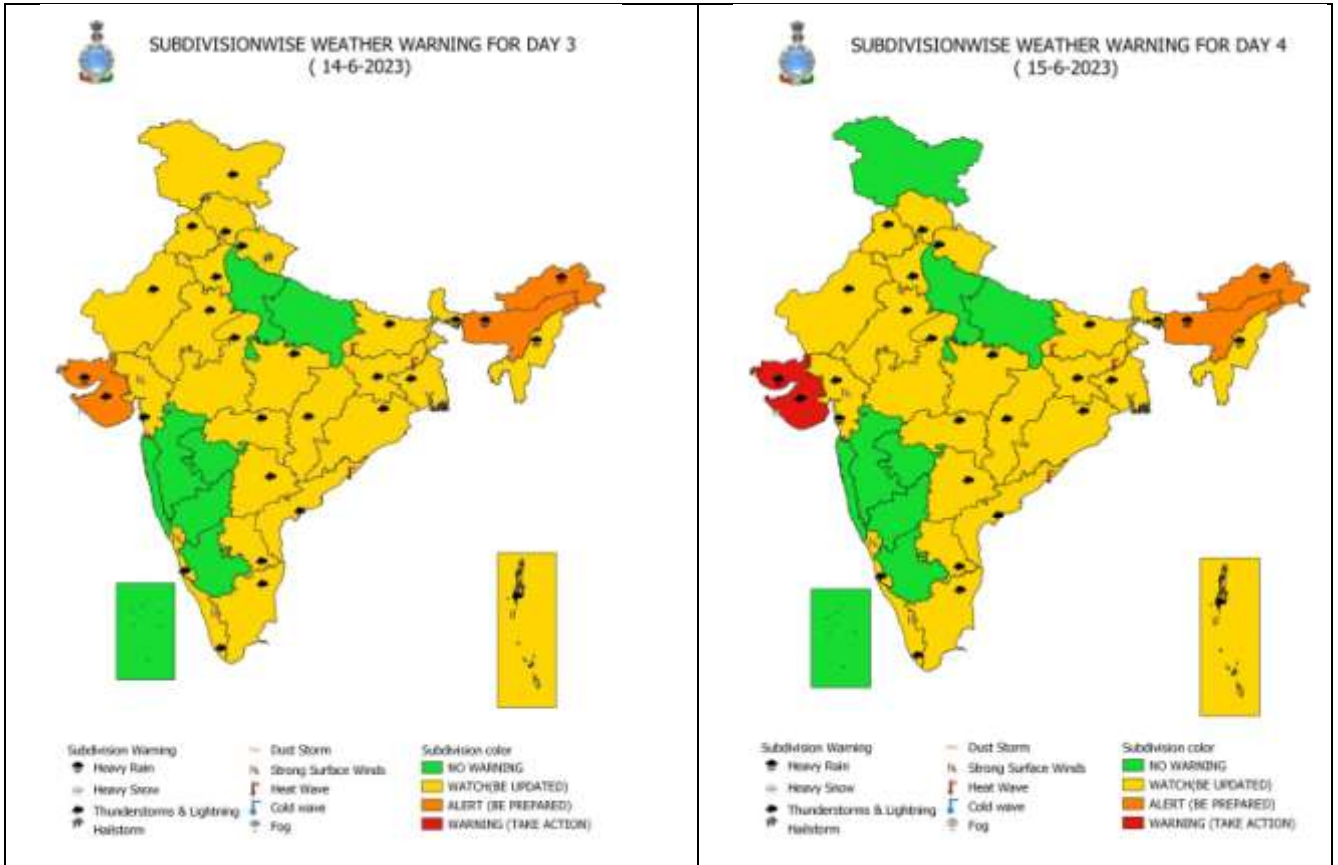
■ 50-63 KT (92-117 KMPH)

■ ≥ 64 KT (≥118 KMPH)

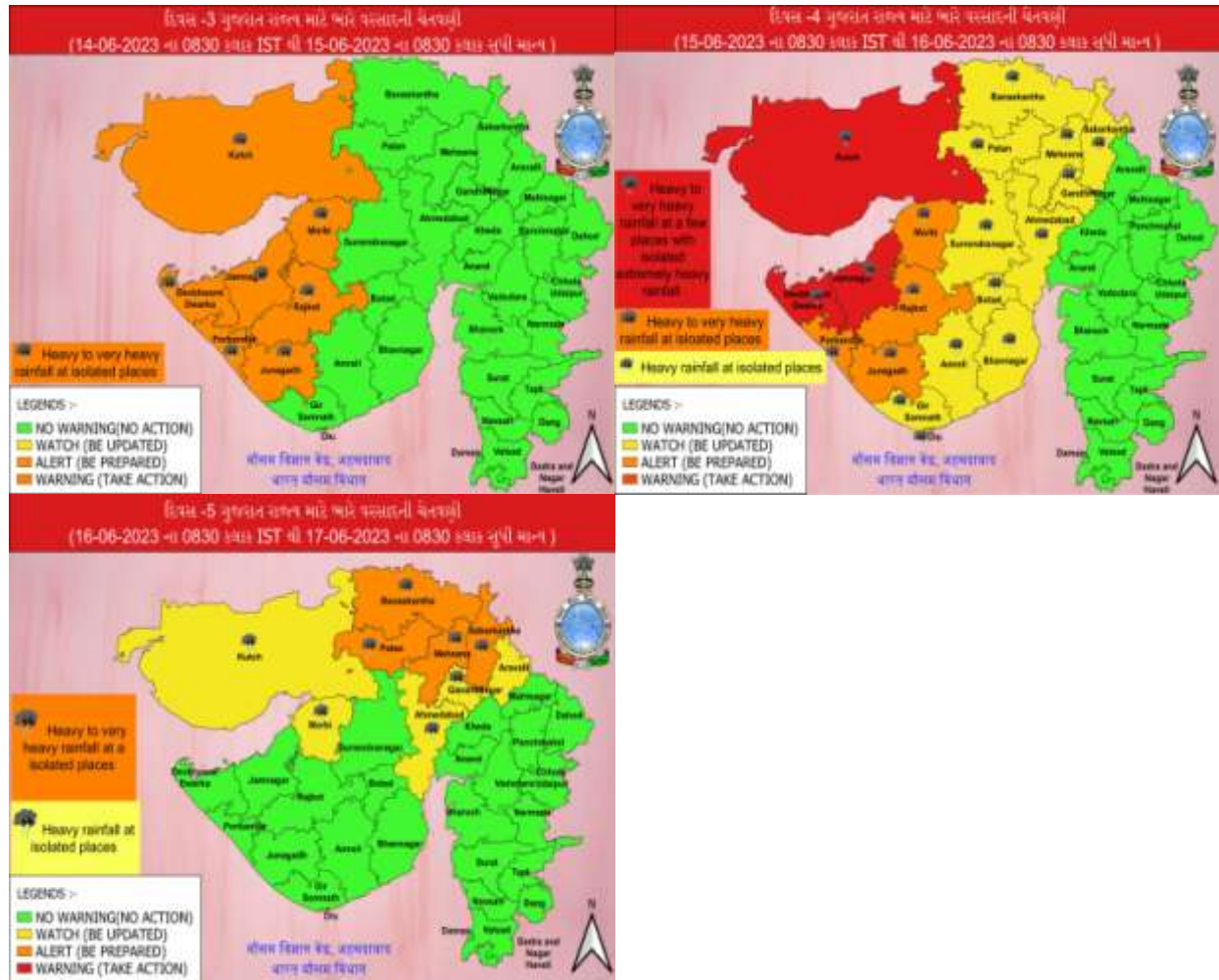
IMPACT OVER THE SEA

MSW (knot/kmph)	Impact	Action
28-33 (52-61)	Very rough seas	Total suspension of fishing operations
34-49 (62-91)	High to very high seas	Total suspension of fishing operations
50-63 (92-117)	Very high seas	Total suspension of fishing operations
≥ 64 (≥118)	Phenomenal	Total suspension of fishing operations

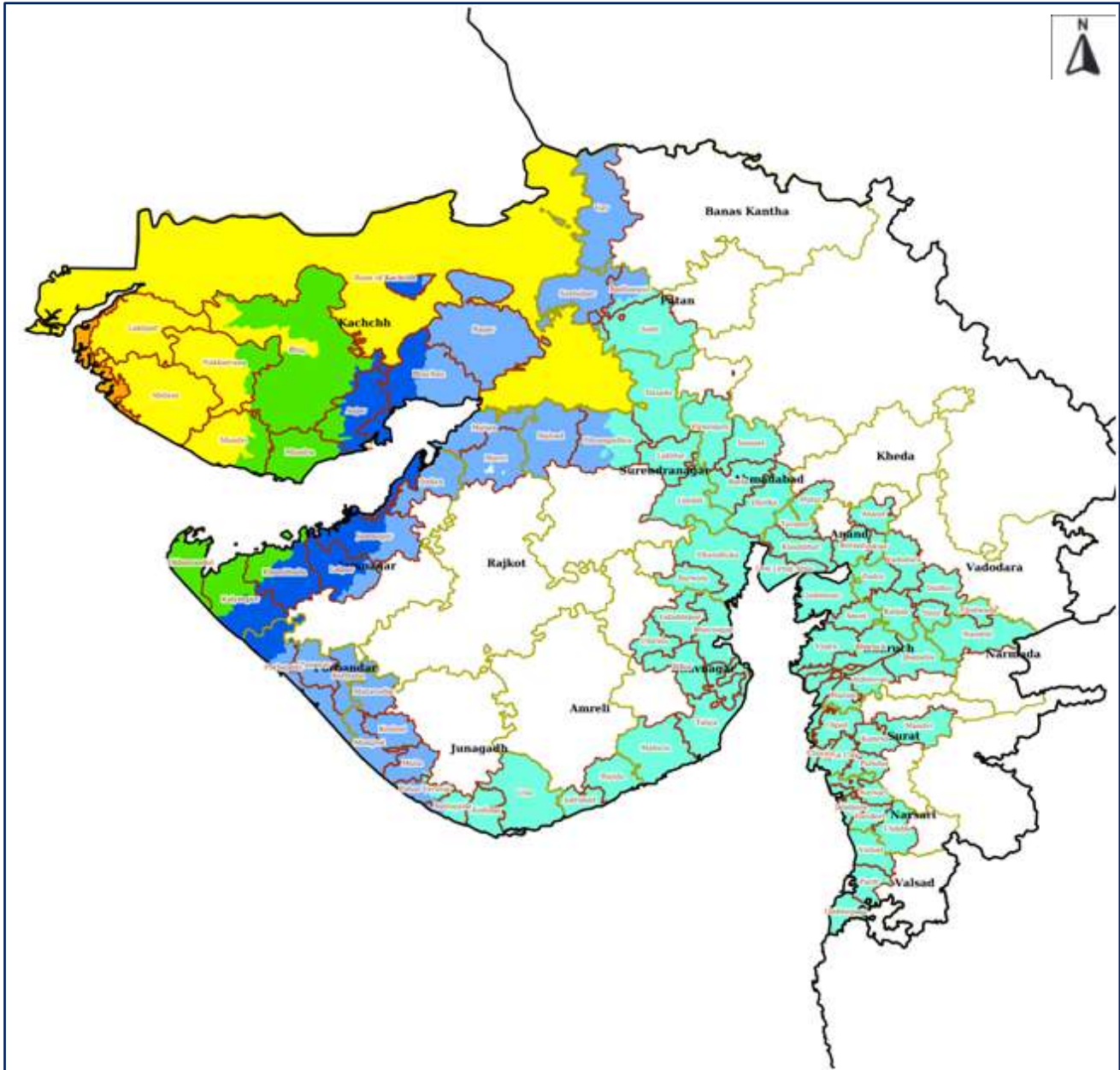
Heavy Rainfall Warning for 14th to 16th June 2023



District-wise Heavy Rainfall Warning Maps for 15th to 17th June

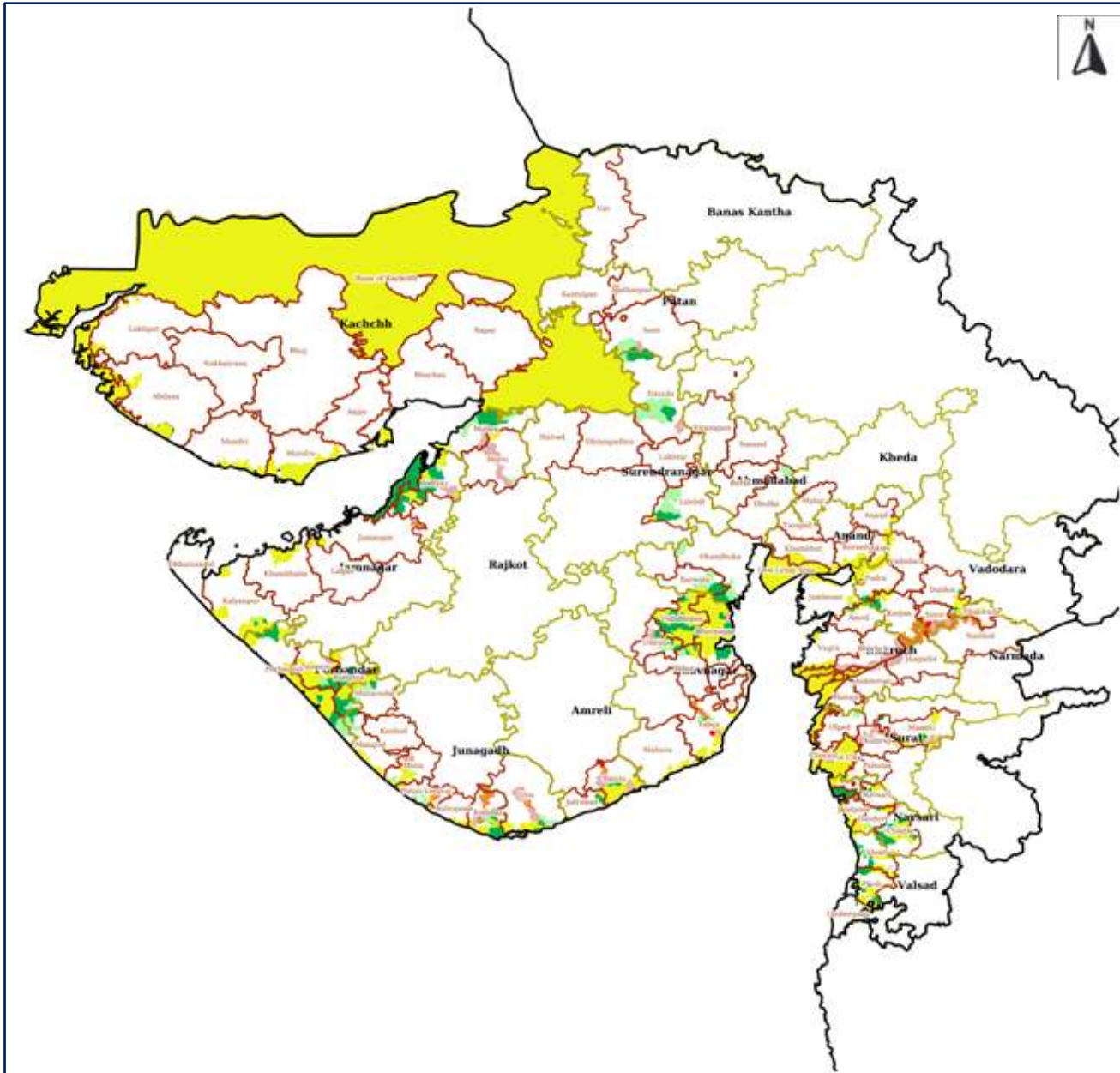


Hazard Map - Wind Speeds for Cyclone Biparjoy Wind



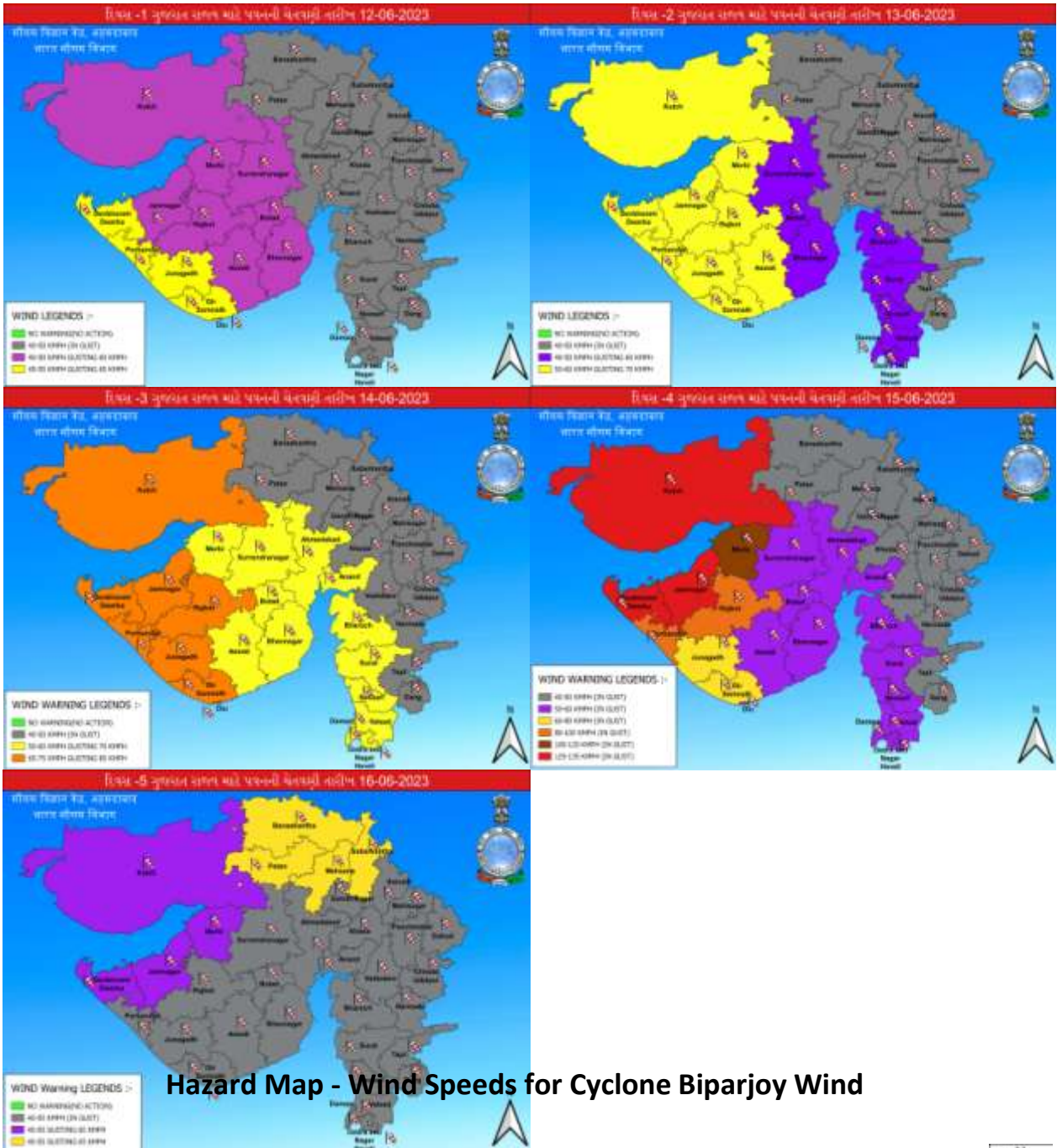
LEGEND	State Boundary	District Boundary	Tehsil Boundary	Village Boundary
	Wind Speed (Less than 31 Km/h)	Wind Speed (31 - 49 Km/h)	Wind Speed (49 - 61 Km/h)	
	Wind Speed (61 - 88 Km/h)	Wind Speed (88 - 117 Km/h)	Wind Speed (117 - 166 Km/h)	
	Wind Speed (166 - 221 Km/h)	Wind Speed (Greater than 221 Km/h)		

Hazard Map – Flood Depth for Cyclone Biparjoy Flood



L E G E N D	 State Boundary	 District Boundary	 Tehsil Boundary	 Village Boundary	
	 Very Low (Less than 0.25 m)	 Low (0.25 to 0.50 m)	 Moderate (0.50 to 1.0 m)	 High (1.0 to 2.0 m)	 Very High (2.0 to 3.0 m)

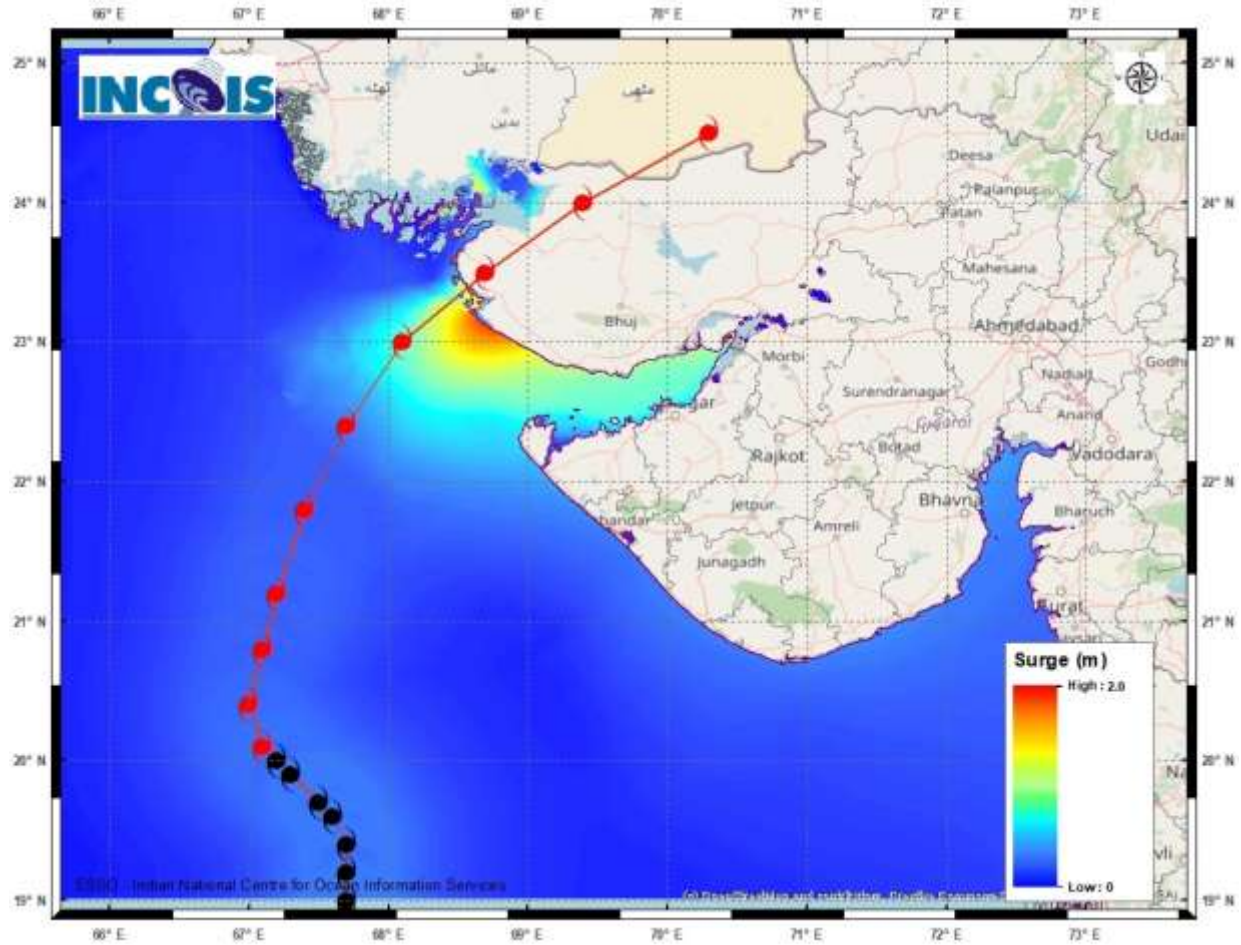
District-wise Wind Warning Maps for 12th to 16th June



Hazard Map - Wind Speeds for Cyclone Biparjoy Wind



Storm Surge Warning Map based on Forecast Track



Astronomical Tide on 15th June 2023

Station	Time (IST)	Height (m)
Porbandar	09:37	2.61
Navlakhi	13:38	7.54
OKHA	11:36	3.74
DEENDAYAL PORT (KANDLA)	13:02	6.79

Fishermen warning graphics

